

# Water Quality NOW

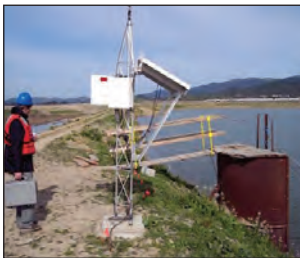
- Monitoring
- Visualization
- Event Detection
- Reporting
- Real Time

*"Adding Merlin has been a huge cost savings for us. Adding sensors is amazingly easy - we just add it to the monitoring system and everything propagates to the database and graphical display. It's all pretty much automatic."*

-J Cuetara, Solano County Water Agency

## Merlin Redefines Data Management and Event Detection

Merlin seamlessly integrates data collection, event detection and presentation for distributed monitoring systems, combining the power and flexibility of a desktop client application with the convenience of a web-based reporting interface. Merlin collects data from any monitoring source, validates your data quality in real-time, then triggers alarms for remediation of critical managed resources.



## Easy to Setup and Manage

Most data management systems leave you mired in the set-up work for graphing and reporting just to make sense of your measurements. Merlin eliminates that extra work, so you can focus on resource management. Merlin's

innovative data inventory scheme makes setting up graphical displays fast and easy. In fact, once a measurement is mapped into the Merlin scheme, you don't have to do anything else to enjoy a range of rich graphs and reports. Merlin automatically imports and consolidates all monitoring data from either OPC Servers or flat files into a single location where projects can be viewed and analyzed and where reporting is generated. There are no per-point fees or storage limitations.

## Greater Accessibility Improves Data Management

Merlin Enterprise includes both a desktop client interface and a web site. The client catalogs and manages all measurements, and is where thresholds are set and alarms are acknowledged. The Merlin client uses Windows Communication Foundation (WCF) to synchronize multiple clients that are running simultaneously. The web site provides a broad range of graphing and reporting tools where time series data can be shared and analyzed through a browser interface. You can select from the stock graphing packages like Merlin Chart, Create-a-Chart or Data Catalog, or build your own graphs that are created automatically as new data is received. All user access and rights to data are managed through a web based credential manager.

## Strict QA/QC Standards Improve Reliability and Results

Merlin applies QA/QC data validation against thresholds set by the user. Monitoring data is QC'd in real-time before posting which improves reliability and limits false positives from triggering erroneous alarms. However, your original raw data is always preserved and available for review or revisions.

## Integration with Oracle, SQL, and SCADA Systems

Merlin integrates with enterprise databases, such as Oracle and SQL Server, and utilizes an OPC compliant interface that works with any SCADA system.



# The Most Complete Data Management Tool For Distributed Monitoring Systems

## Powerful Charting Improves Understanding

Merlin's data presentation is best experienced through its extensive graphics capabilities. SiteHawk is Merlin's map based presentation of monitoring data. Combined with your own GIS shape file overlay, colored icons instantly reveal station status and alarm events in your distributed monitoring system. When you need to know more, monitoring data can be plotted in real-time or for any time period. Create-a-Chart will quickly identify relationships between any 2 series of measurements. In a variety of easy-to-use interfaces, Merlin Enterprise accurately presents your data so you can make more informed decisions about your monitoring system.

## Automatic Status Reports Keep All Clients Notified

Merlin automatically delivers status reports via email so that everyone is notified on server status, records processed, the number of errors and more. Merlin logs all transactions that occur, and coupled with time-stamped backup and data archiving, the risk of losing important data is eliminated.



## Merlin Enterprise Includes:

- Interactive GIS Mapping and Charting (SiteHawk)
- Automated Data Processing
- Scaled and Raw Data Display
- QA/QC Data Validation
- Real Time Alarm Enunciation
- Real Time Charting
- Transaction Logging
- Automatic Status Reports
- Client Synchronization
- Oracle & SQL Server Integration
- Modal Merlin Charting
- Instrument Inventory with Metadata
- Import and Export Data
- Export Chart Images
- Integrated Web Interface
- Web Based Credential Manager
- Data Catalog Time Series with QA/QC
- Create-a-Chart Time Series

## Extension Modules:

- OPC Compliant Interface
- Real-Time Statistical Analysis (Canary)
- Customizable Reports

Contact Eyasco at [info@eyasco.com](mailto:info@eyasco.com)  
For more information visit [www.eyasco.com](http://www.eyasco.com)